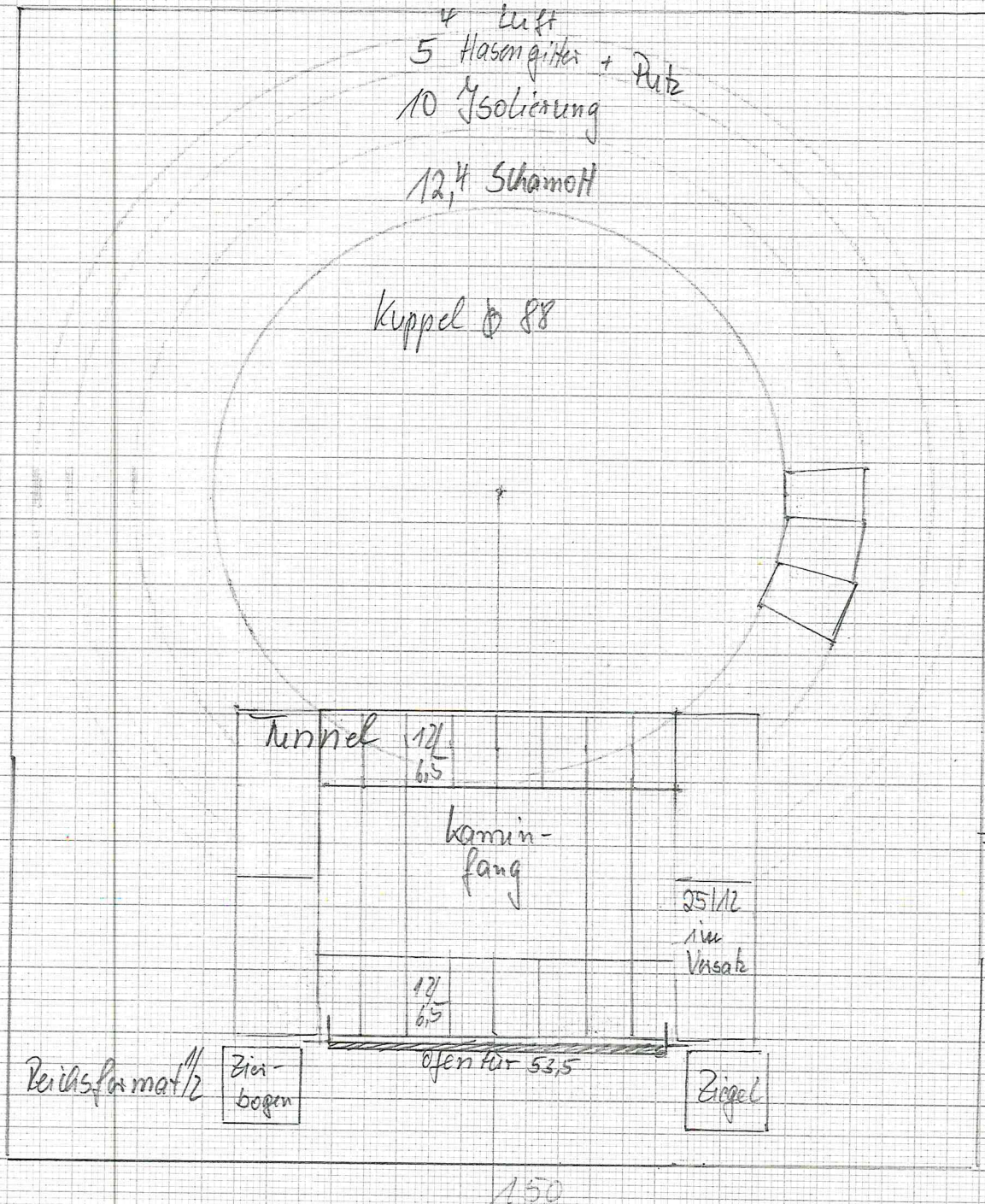
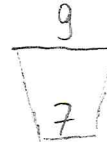
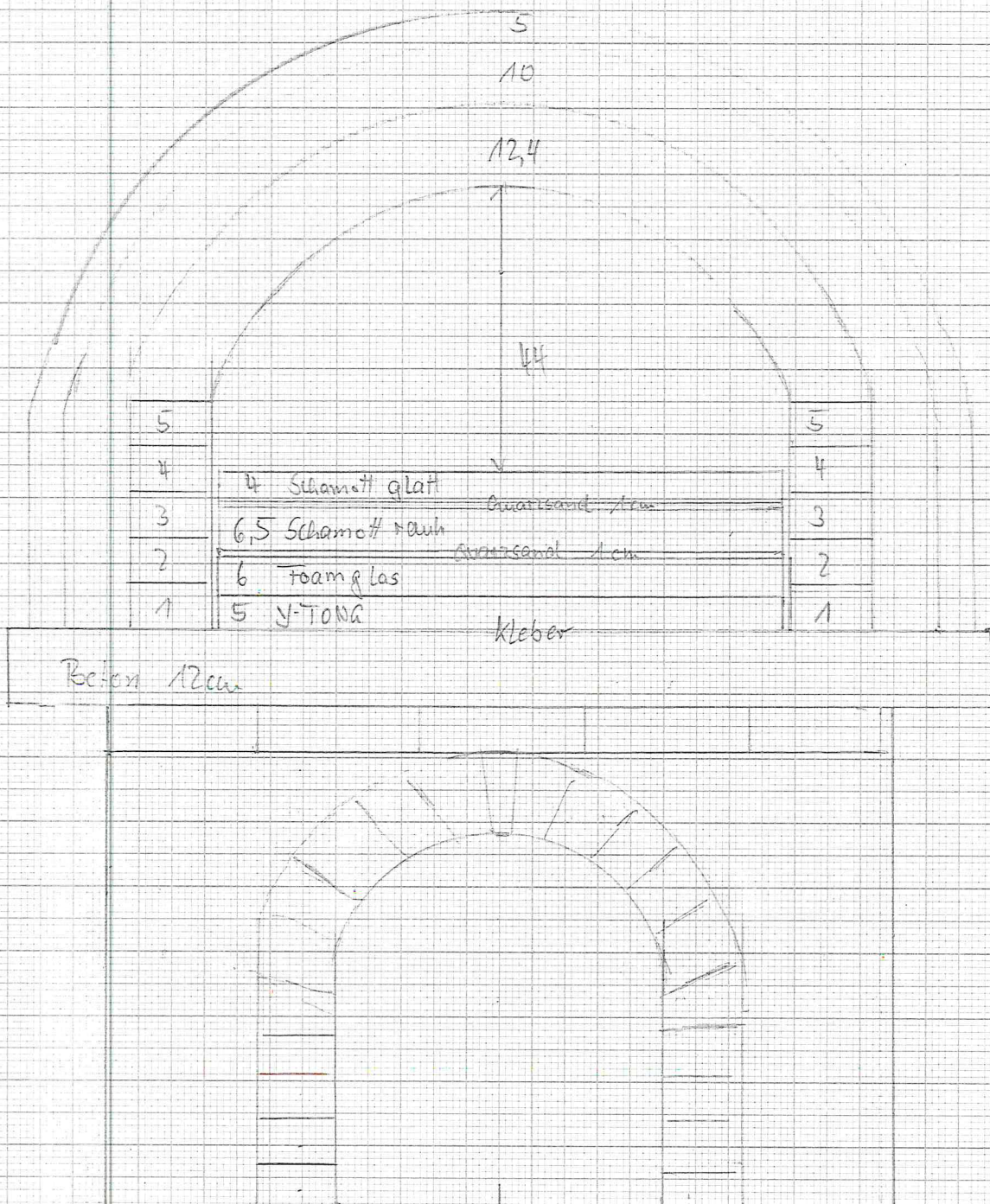


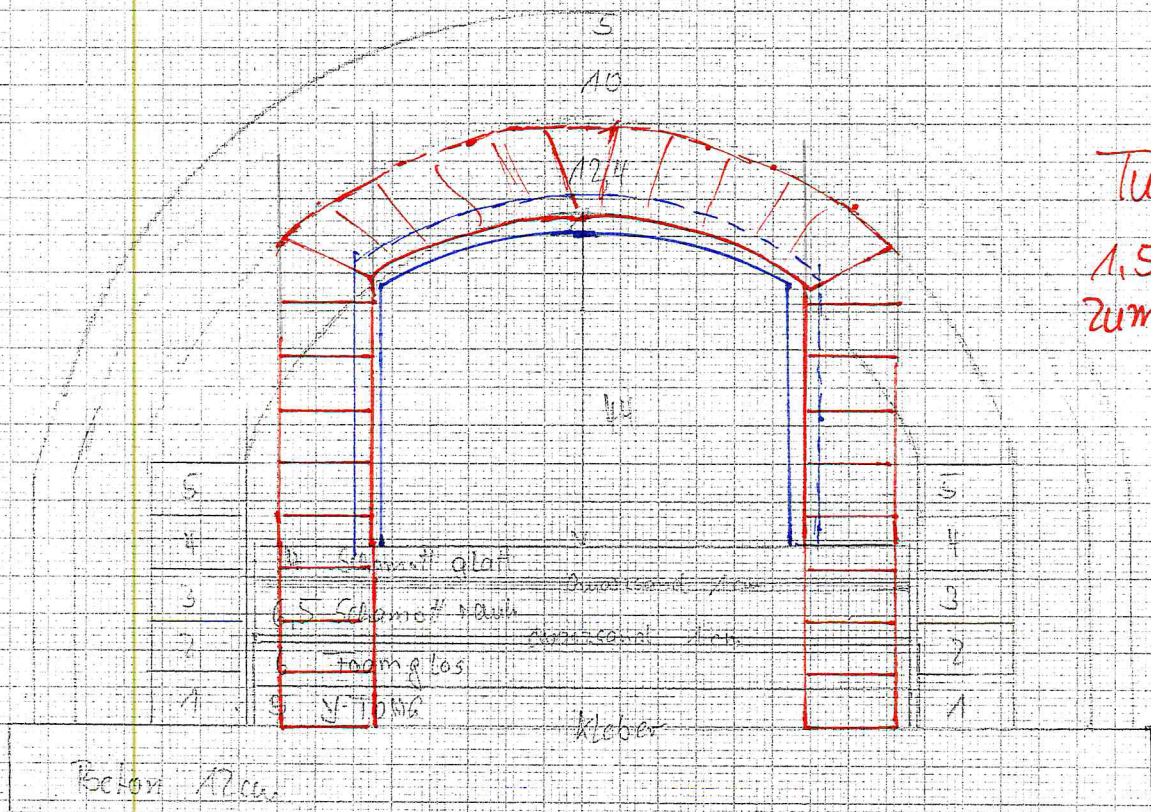
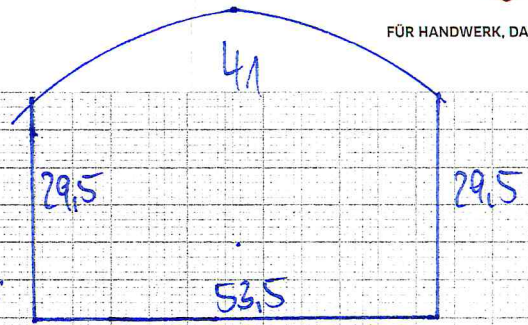
Schamotte: 250/124/64 $U = d \cdot \pi = \text{innen } 276,5 \text{ cm} : 7 = 39 \text{ Steine}$
 außen $354,4 \text{ cm} : 9 = 39 \text{ Steine}$



Ofen für
 Feuerholz 53,
 Luft je 0,7 = 1,
 Tunnelbreite 5



Öffnung Montagemaß:



Tunnel
1,5m Luft
zum Türwahn